

The Singer from Dhol Handouts

Handout Package © 2005 Pegasus Press
Handout Artwork © 2005 by individual creators
Please refer to *Worlds of Cthulhu* #2 for the artists involved

Oyster Island Postcards



Tanner's Town harbor



The jetty at Tanner's Town harbor



Tanner's Town Main Street



Bramwell's General Store

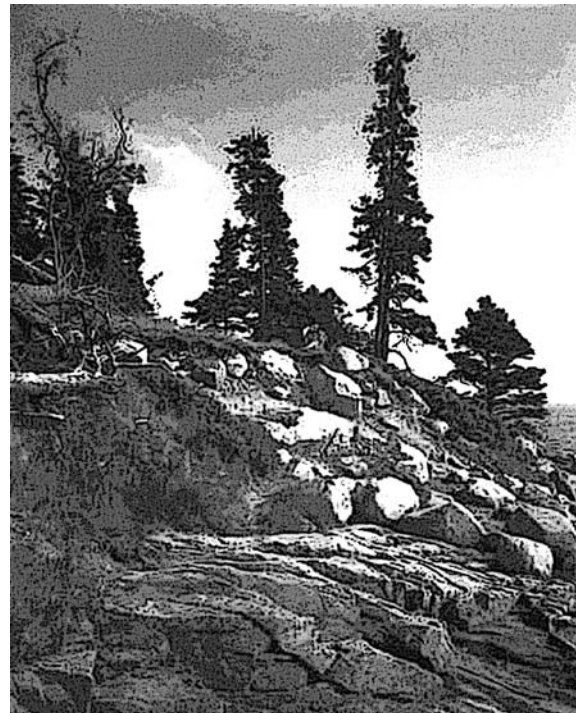
The Light House



Indian Point, Oyster Island, ME



St. Savior's Old Church

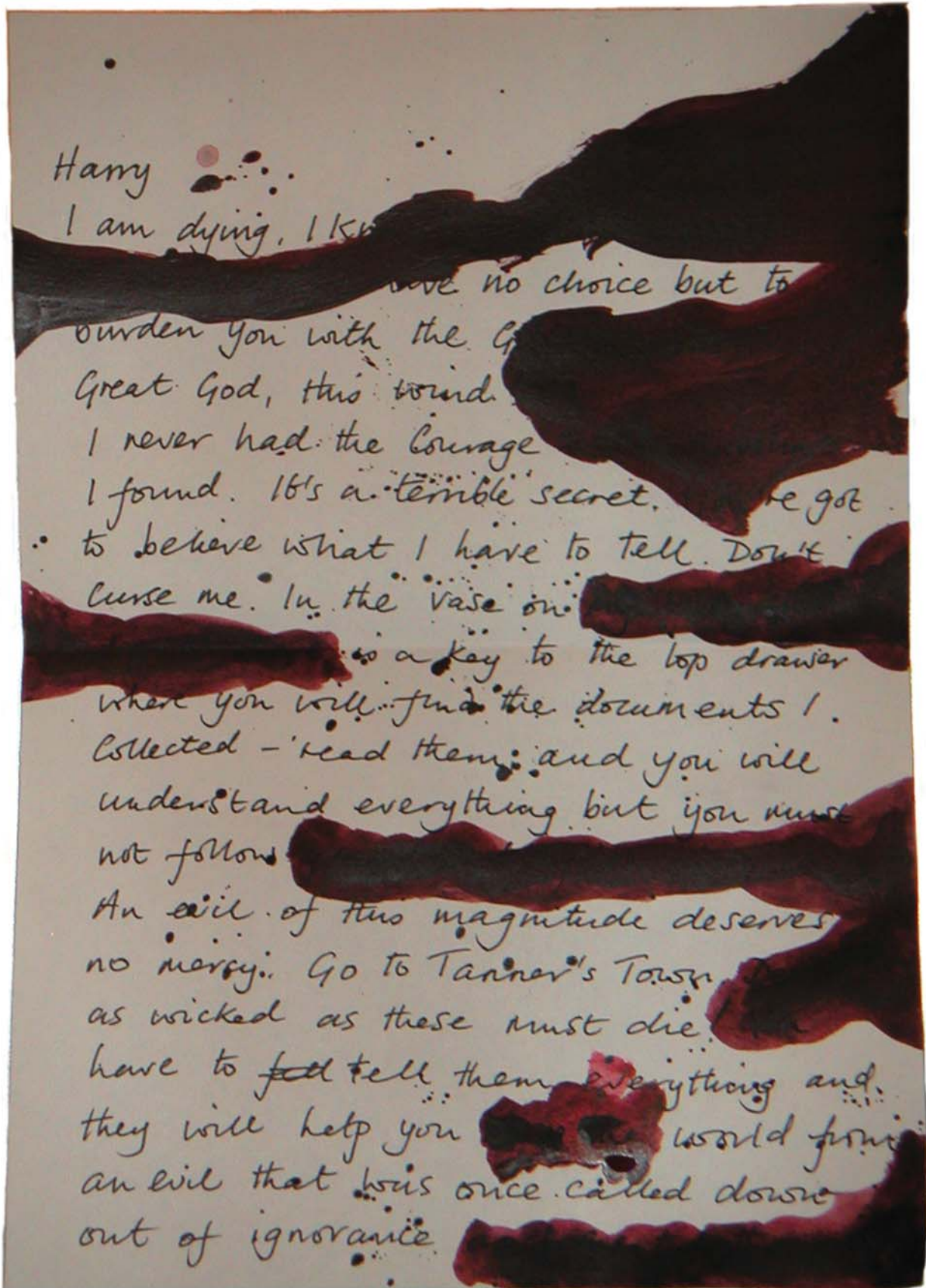


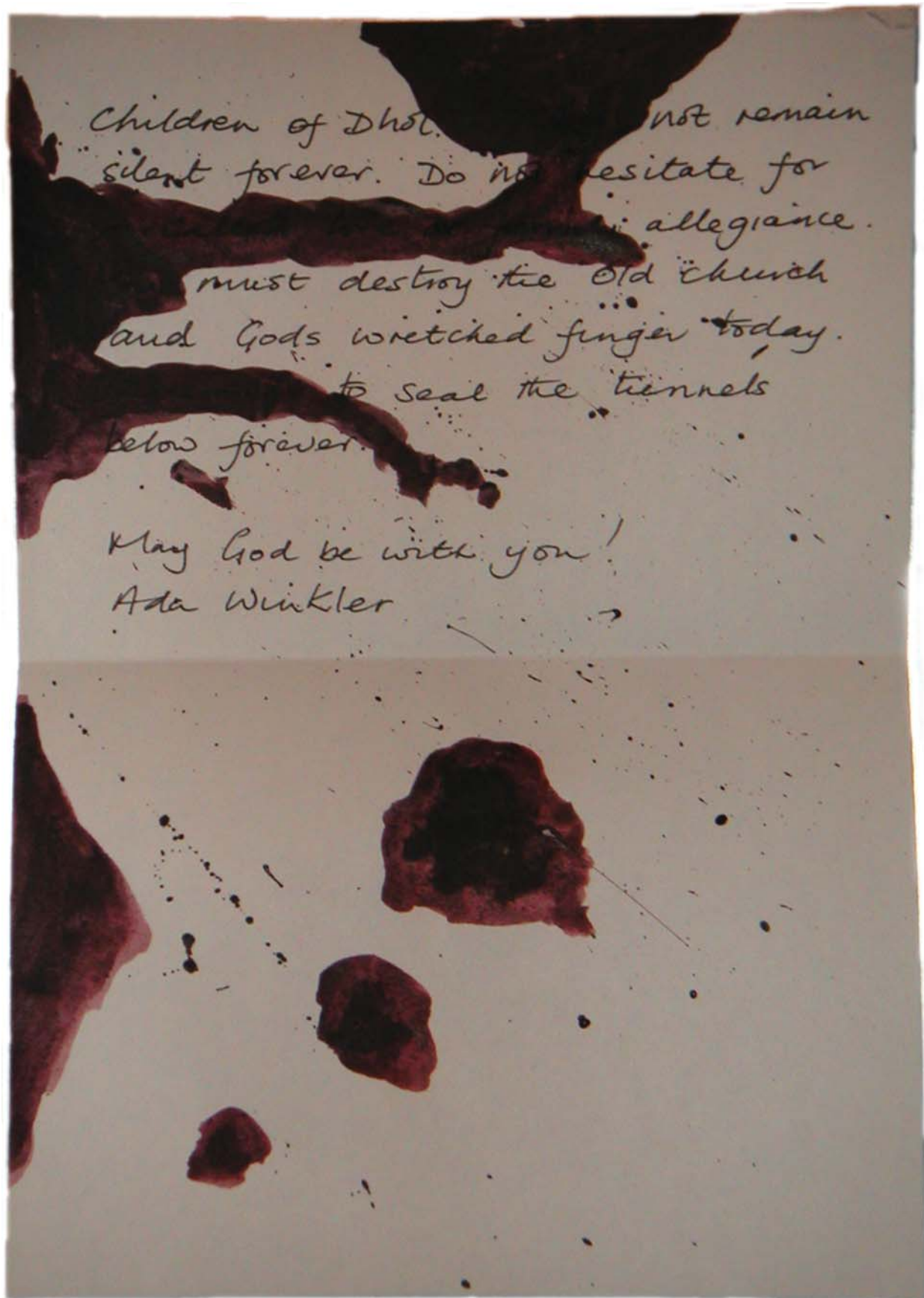


The restored wood carvings in St. Savior's Old Church

Handout #1: Ada's Letter to Harry

The paper is stained with blood, the ink dissolved in many places, and only fragments of the text are still legible.





Handout #2: Ada's documents

1. A page with a sketch of a cave painting, torn from a book

The sketch shows a giant figure with something protruding from its mouth. A shape can be discerned next to its head, although it is not certain whether this is supposed to be a second head or another being sitting on the giant's shoulder. Several smaller human shapes appear to be dancing around the tall figure.



2. Newspaper clipping from the Boston Globe, 1907

[...] Consideration of static principles has now led the two archaeologists to conclude that the eroded nose of the Sphinx of Gizeh must actually have been a far longer piece of rock, "like a trunk". [...]

3. Hand-written notes

Among other material, the supplements to Gessner's tome include a woodcut entitled "Harpy", showing a cat-like creature with wings and an abnormally prolonged nose.



Harpye

4. Page from 1911 Encyclopedia Britannica underlined in ink

populanae) on way system. Pop. (1901), 24,620. A covering t
 elialong the large trade is conducted in native front of ca
 ad branched boats as far as the east coast of Africa. three or r
 According to the other a
 ontinent to open at th
 it furnished kind of ceramic ware which is char-
 B.C. It of- acterized by a translucent body, also
 tance to Sul- loosely used for the finer kinds of
 e; and from ware generally, popularly known as
 hich Strabo, china (see *CERAMICS*). The French
 900. (v. 2, 6, porcelain, from which the word
 beginning, h comes into English, is an adaptation
 ater Rutilius of the Italian porcellana, a covrie-
 t as in ruins. shell, the beautifully polished surface
 Deaths. In- of which caused the name to be
 of some im- applied to the ware. The Italian word
 was still an is generally taken to be from porcel-
 o 86 time of la, diminutive of porco, pig, from a
 supposed resemblance of the shell to
 a pigs back.

s, Cities and
 a 115 FO **PORCH** (through the Fr. pore/fe, longer, an-
 sqq.); I. Fal- from Lat. porticus; the Ital. equiva-
 legli Scavi lent is portico, corresponding to the bles are g

5. A thin typewriter manuscript.

No family member can make any sense of the text, satiated as it is with specialist lingo

The Pied Piper of Hamelin an etymological study

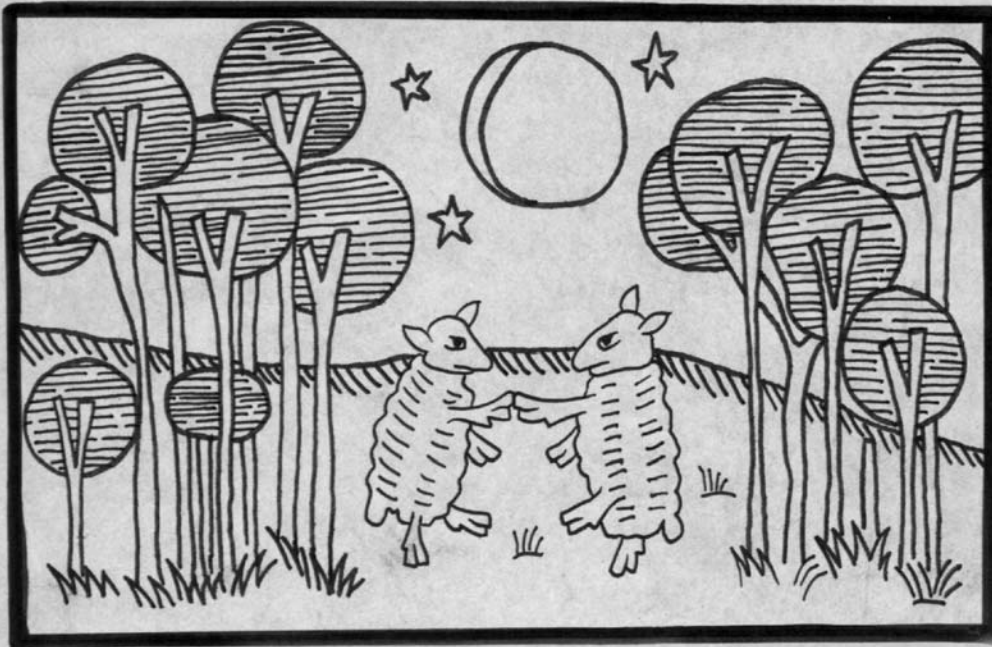
6. A page from an art-historical magazine.

With some effort, it is possible to get an idea of the text's content in spite of specialist terminology and stilted phrases.

The author describes the art of Hieronymus Bosch, who always pieced together the demons in his visions of hell from body parts of real animals. Thus, the author concludes, a painting that is usually attributed to Bosch cannot actually be from his hand – a creature that is shown there sitting on the shoulder of a monk is a nightmare creature, liberally drawn from fantasy.

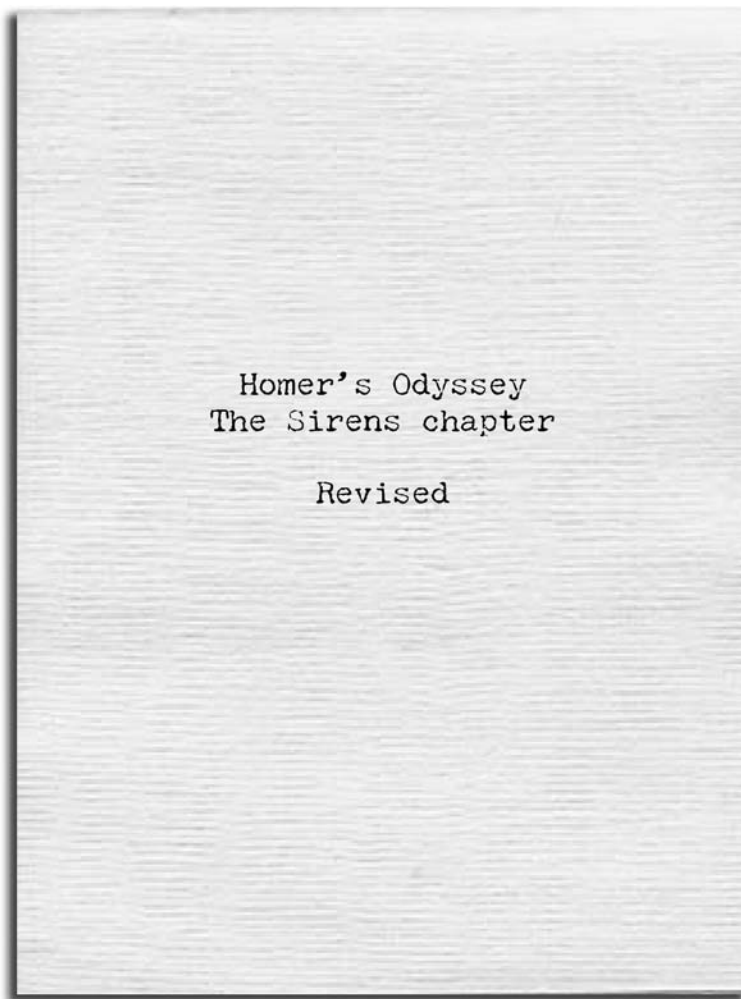
7. A woodcut from *Malleus Maleficarum*, the Hammer of Witches.

The moon shines onto a forest where sheep are dancing on their hind legs.



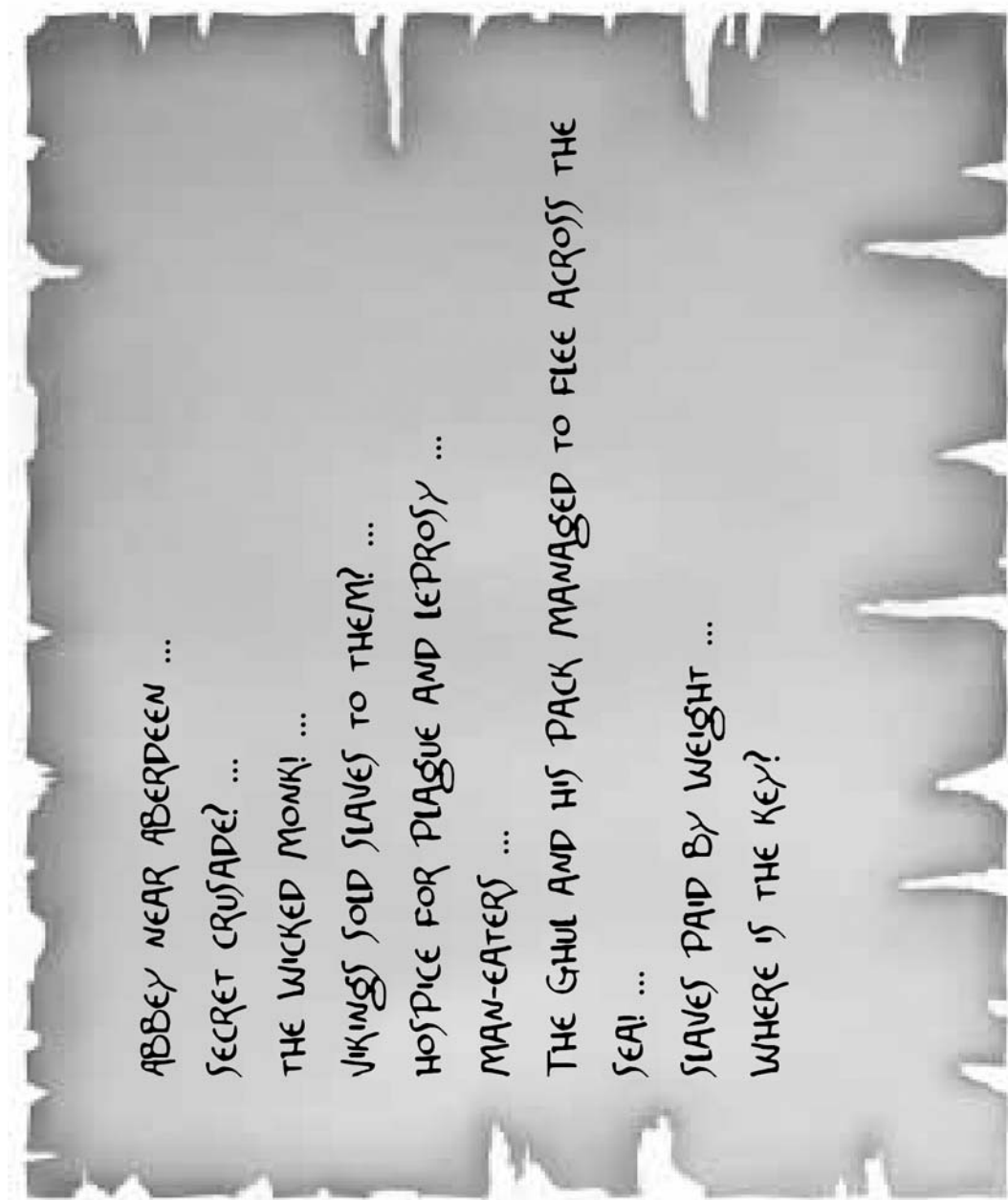
Of werewolves: half human and half animal, possessed by the devil, they stalk moonlit nights. They drink their victims' warm blood and devour their entrails in orgies of satanic cruelty.

8. A type-written revision of the *Odyssey*; the sirens chapter.

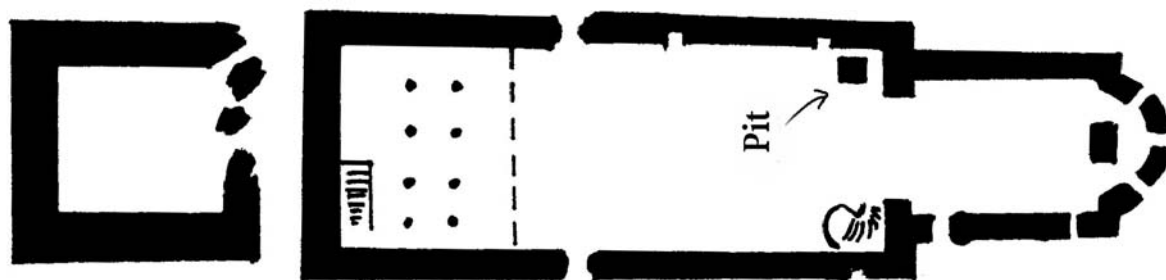


9. A copy of a letter of complaint from the French settlers of the Île de Crane, in French. The settlers ask the King of France, Louis XIV, to aid them against the buccaneer Cord Wainwright, who had set up the headquarters of his pirate fleet in the Sainte-Saveur church in 1705.

10. A text in Latin, with hand-written remarks in English

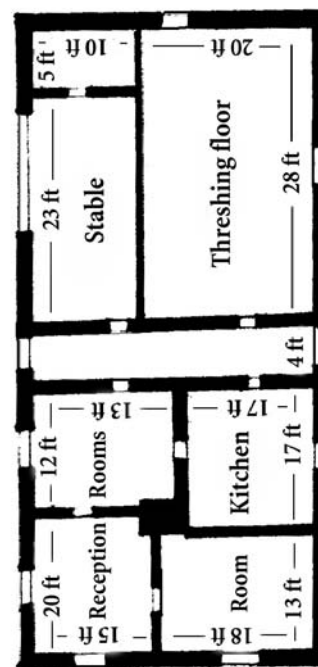


Handout #3: Floor plan of the church of St. Savior and the vicarage



St. Savior's
"Old Church"

Oyster Island, ME
Est. 1690s



Handout #4: The notebook of Revd. Markham

These are brief entries in Revd. Markham's scrawl. The notes follow no apparent sequence or order.

* The order assembled to close the way to Dhol forever. The events of that night in the abbey should never be repeated.

* The guardians' order originates in Britain.

* The twelfth grandmaster sent out the brethren to regain the key.

* One of the buccaneers turned flautist and pointed the way for the Singer from Dhol before he was slain by his fellows. And every night the Singer came to the island, calling upon those that were his in the dark.

* The Teutonic Knights' Order was not able to stop the enters of humans.

* Many of the brethren gave their life to fight the spawn of evil, for nothing will stop the idolaters when they are called by the

Singer. They come rushing from afar when the singing calls them to their bloody feast.

* put up a stone circle?

* Beware if the children of the Ghul should ever rise again!

* Brother Clarke found the key, but didn't hand it over to the order? Quote: "I hid it where redemption and secretive silence are to be found."

* Some of the Ghul's wicked children managed to flee to their homeland in those days of terror. Others remained, and hidden, and had no power without the call.

* The sacrilegious monk is said to have fled to a land "Dhol". His book of blasphemous incantations has not been seen since that day.